

# Year 6 SATS – January 2022

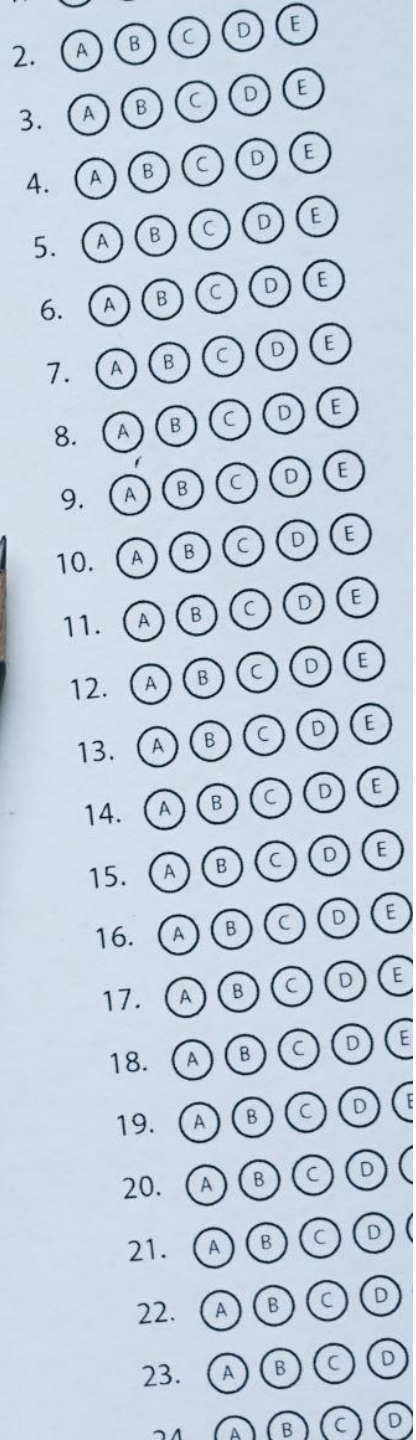


At the end of  
Year 6,  
children in  
England sit  
tests in:

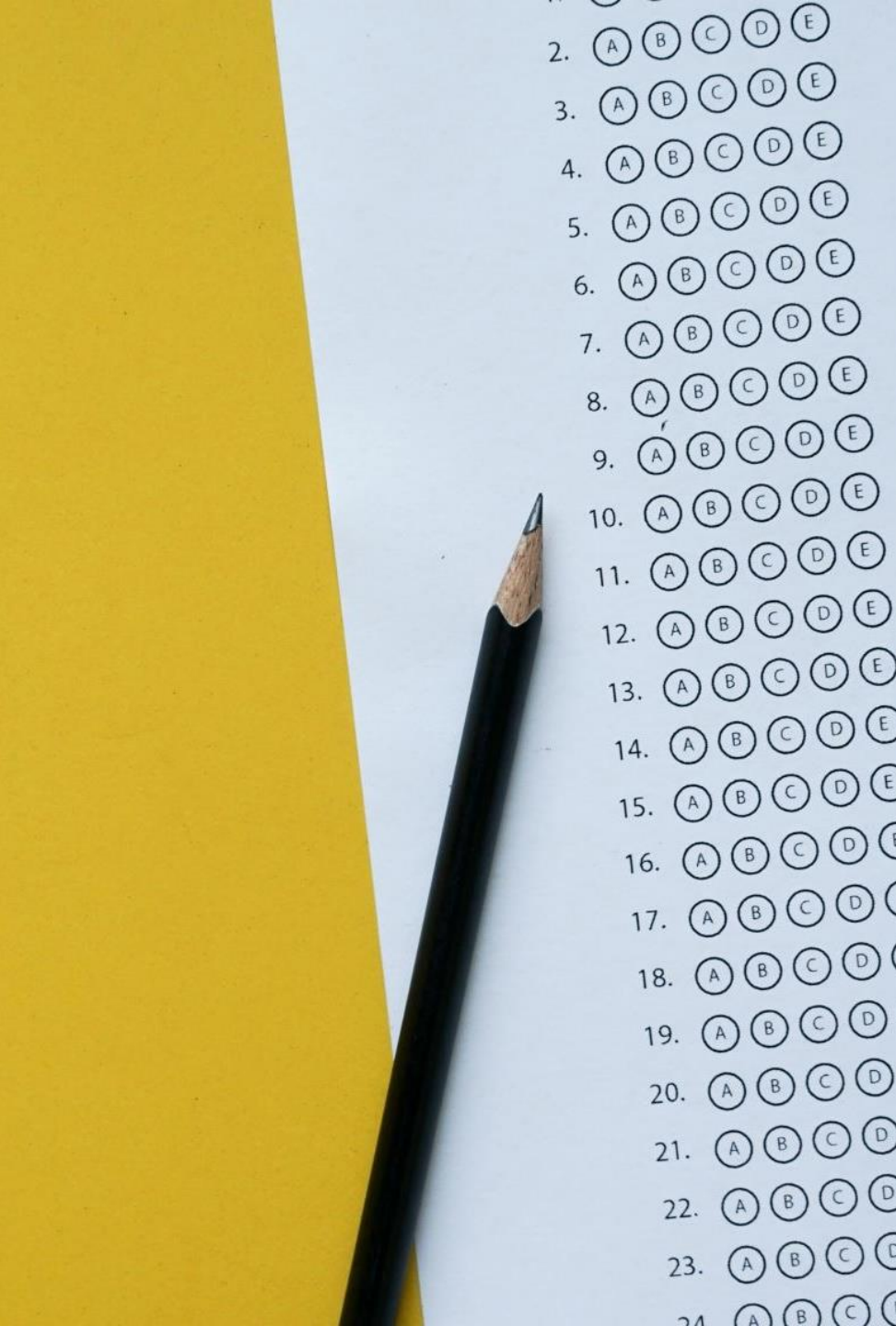
- Reading
- Maths
- Grammar, punctuation and spelling (GPS)
- These tests are both set and marked externally, and the results are shared with all secondary providers to begin the KS3 education provision. Assessments will be taken from this point (end of KS2).
- A writing outcome will be delivered using a teacher assessment based on the quality of writing during the year.
- The KS2 SATs for English and maths taken since 2016 reflect the amended national curriculum and are more rigorous than previous years' tests.
- In 2020 and 2021 KS2 SATs did not take place due to the Covid-19 pandemic.

# Reading

- The reading test is a single paper with questions based on three passages of text. **Your child will have one hour, including reading time, to complete the test.**
- There will be a selection of question types, including:
  - **Ranking/ordering**, e.g. 'Number the events below to show the order in which they happen in the story'
  - **Labelling**, e.g. 'Label the text to show the title of the story'
  - **Find and copy**, e.g. 'Find and copy one word that suggests what the weather is like in the story'
  - **Short constructed response**, e.g. 'What does the bear eat?'
  - **Open-ended response**, e.g. 'Look at the sentence that begins *Once upon a time*. How does the writer increase the tension throughout this paragraph? Explain fully, referring to the text in your answer.'
- Since 2018 the reading content of the KS2 SATs has been closely linked to the curriculum to ensure children are drawing on their knowledge when answering reading comprehension questions.





A vertical strip of a multiple-choice test paper is shown on the left side of the image. It features a yellow background on the far left edge. The paper is white and contains a list of 24 numbered questions, each with five circular options labeled A, B, C, D, and E. A black pencil is positioned vertically, pointing downwards, overlapping the left side of the paper.

# GAPS – Grammar, Spelling and Punctuation

---

- Usually, the GPS test consists of two parts: a **grammar and punctuation paper** requiring short answers, lasting 45 minutes, and an **aural spelling test of 20 words**, lasting around 15 minutes.
- The GPS test includes two sub-types of questions:
  - **Selected response**, e.g. 'Identify the adjectives in the sentence below'
  - **Constructed response**, e.g. 'Correct/complete/rewrite the sentence below,' or, 'The sentence below has an apostrophe missing. Explain why it needs an apostrophe.'



# Maths

- Children sit three papers in maths:
- Paper 1: **arithmetic**, 30 minutes
- Papers 2 and 3: **reasoning**, 40 minutes per paper
- Paper 1 will consist of fixed response questions, where children have to give the correct answer to calculations, including long multiplication and division. Papers 2 and 3 will involve a number of question types, including:
  - Multiple choice
  - True or false
  - Constrained questions, e.g. giving the answer to a calculation, drawing a shape or completing a table or chart
  - Less constrained questions, where children will have to explain their approach for solving a problem



# Dates:

- The [Year 6 KS2 SATs](#) will be administered in the week commencing 9 May 2022.
- The SATs timetable runs as follows:
- **Monday**  
English GPS Paper 1: questions  
English grammar, punctuation and spelling Paper 2: spelling
- **Tuesday**  
English reading
- **Wednesday**  
Mathematics Paper 1: arithmetic  
Mathematics Paper 2: reasoning
- **Thursday**  
Mathematics Paper 3: reasoning



# National Curriculum Levels

---

- The previous [national curriculum levels](#) have been removed, and instead children are given [scaled scores](#)
- **You will be given your child's scaled score and whether they have reached the expected standard set by the Department for Education ('NS' means that the expected standard was not achieved and 'AS' means the expected standard was achieved).**
- The range of scaled scores available for each KS2 test is:
  - 80 (the lowest scaled score that can be awarded)
  - 120 (the highest scaled score)
- **The expected standard for each test is a scaled score of 100 or more.** If a child is awarded a scaled score of 99 or less they won't have achieved the expected standard in the test.
  
- **Teacher-assessment results at the end of Year 6**
- As well as receiving KS2 SATs results, at the end of Y6 you will be told your child's teacher-assessment results for reading, writing. The teacher-assessment result codes you can expect to see are:
  - **GDS:** Working at greater depth within the expected standard (for writing assessment only)
  - **EXS:** Working at the expected standard
  - **WTS:** Working towards the expected standard (for writing assessment only)



# How can you help

- Boosters
- Homework
- Interactive activities - active learn/Reading plus
- CGP revision materials
- February half term booster sessions